

ACEAIR®



Accessories for Angle-seat Valve

Various accessories can be installed and used: NAMUR adapter for pilot valve, direction indicating, stroke limiting or manual switching can be achieved conveniently.

Accessories For Pneumatic Angle Seat Valve

NAMUR-Adapter for Pilot Valve

Accessories

NAMUR-Adapter for pilot valve



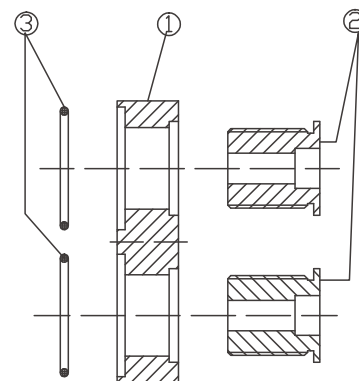
Advantages / Benefits

- ▶ Namur interface allows easy installation of pilot valve to actuator
- ▶ Increased operational reliability when using the NAMUR pilot valves Types 5/2 way 4M310-08

Technical Data

Mounting for NAMUR-Adapter

- 1 Plate
- 2 Hollow screw
- 3 O-rings



How to Order

NAA

1

Code

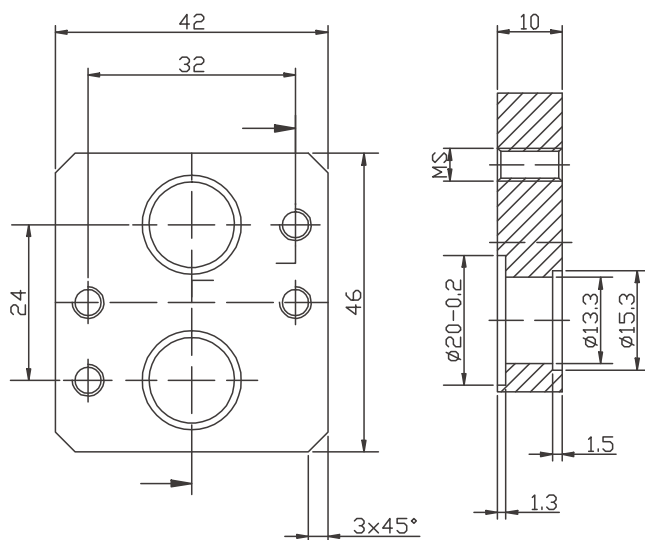
1	Adapter for actuators: 50/63/80mm
2	Adapter for actuators: 100/125mm

Model

NAA	NAMUR-Adapter
-----	---------------

Dimensions [mm]

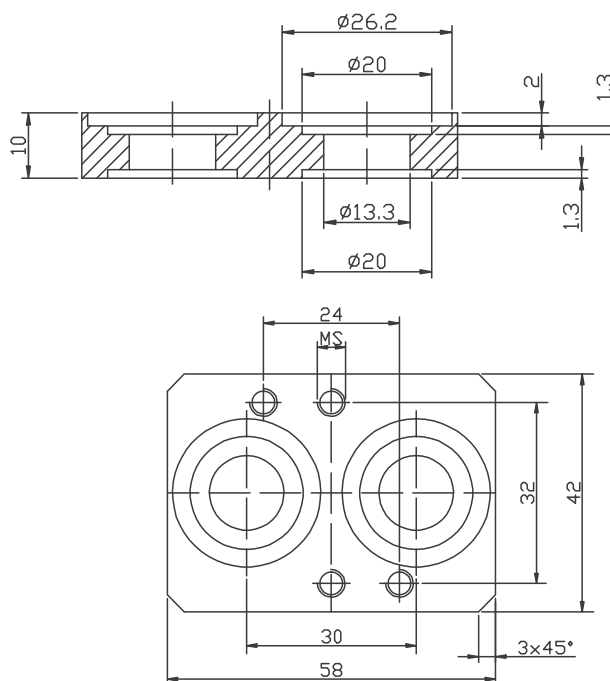
Adapter for actuators: 50mm, 63mm, 80mm



Version 1

Namur-Adapter for **stroke actuator**
 Ø 50 to 80 for angle seat and globe valve
 Ø 63 to 100 for diaphragm valve
 NAMUR adapter for **rotary actuator**
 Ø 63 on request

Adapter for actuators: 100mm, 125mm



Version 2

Namur-Adapter for **stroke actuator**
 Ø 100 and 125 for angle seat and globe valve
 Ø 125 for diaphragm valve
 NAMUR adapter for **rotary actuator**
 Ø 100

Angle Seat Valve(Piston Valve) Series PVN (NAMUR type Actuator)

2/2-way Angle-Seat Valve for medium up to +180°C, NAMUR type Actuator connection is available on customer request

DN 15-65



- NAMUR direct connections on piloting head, direct coupling with solenoid valve
- NC and NO universal actuators with modular universal accessory program up to control heads



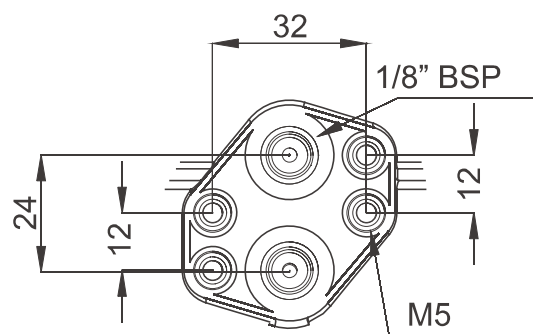
◆ **NAMUR type Actuator**

- ▶ Namur interface allows easy installation of pilot valve to actuator
- ▶ Increased operational reliability when using the NAMUR pilot valves Type 4M310-08/10

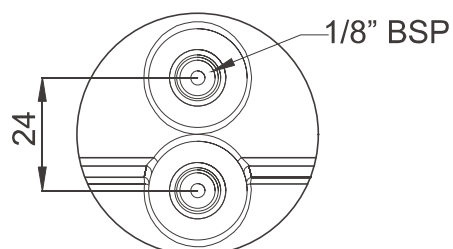
◆ **Actuator**

Port Size	Standard Actuator	
	PA	
DN15	50	Available
DN20	50,63,80	Available
DN25	50,63,80	Available
DN32	63,80	
DN40	63,80	
DN50	63,80	
DN65	80,100	

NAMUR Port



Standard Port



Angle Seat Valve(Piston Valve) Series PVT (Intelligent Valve Positioner & Electronic-Pneumatic Valve Positioner)



2/2-way Angle-Seat Valve for medium up to +180° C, With Valve Positioner
Electronic-pneumatic Valve Positioner and Intelligent valve positioner is optional
connection is available on customer request DN15-100

- Intelligent Valve Positioner series 1400 is optional;
- Intelligent Valve Positioner series 1500 is optional;
- Electronic-pneumatic Valve Positioner series 1500 is optional;
- For solenoid valve details requirement, Pls contact ACME sales department.

- Compact stainless steel design
- Electrical waterproof connectors
- LCD with backlight
- Easy to start-up
- Rich additional software functions;



Series 1400

◆ A positioner is a device put into a valve to ensure that it is at a correct position of opening as per the control signal. A normal converter only sends the opening/closing request to valve but can not confirm its position. Our positioner has a pneumatic feedback controller. Controlled external supply air/liquid to positioner provides power to positioner to position a valve.



Series 1500



Series YT-1000

◆ YT-1000 electric pneumatic positioner is used for rotary operation of pneumatic rotary valve actuators by means of electrical controller or control systems with an analog output signal of 4 to 20 MA or split ranges; YT-1000 electric valve localizer that is incompatible with actuators, and receipt 4~20mA DC current signal from controller or control system, then transfer into air pressure what transfer to the actuator which connect with it , in order to control value position.

Angle Seat Valve(Piston Valve) Series PVE (Solenoid Valve)

**2/2-way Angle Seat Valve for medium up to +180°C, With Solenoid Valve connection is available on customer request
DN 10-100**

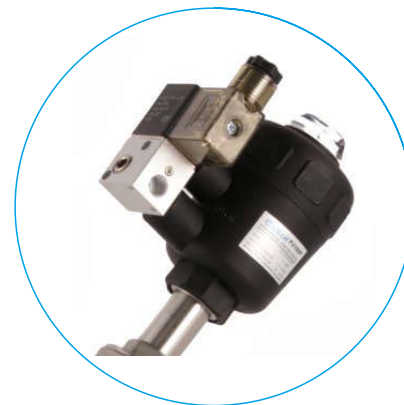


◆ **Ex-proof coils is available.**

- 2/3 way solenoid valve can be used in single acting angle seat valve;
- 2/5 way solenoid valve can be used in double acting angle seat valve;
- EX-proof coils is optional
- For solenoid valve details requirement, Pls check ACME catalogue page-Solenoid Valve.



◆ **2/5 way solenoid valve can be used in double acting angle seat valve;
NAMUR-Adapter for Pilot valve ;
Valve Model: 4V210-08/4V310-08**



◆ **2/3 way solenoid valve can be used in double acting angle seat valve;
Valve Model: 4V210-08/4V310-08**



◆ **2/5 way solenoid valve can be used in double acting angle seat valve;
copper tubing & LOK-fittings is as the accessories.
Valve Model: 4V210-08/4V310-08**



◆ **2/3 way solenoid valve can be used in double acting angle seat valve;
Valve Model: 3V210-08 & 3V310-08**

Angle Seat Valve(Piston Valve) Series PVS (Proximity Switch for Position Feedback)



Single Switch



Double Switch

2/2-way Angle-seat Valve for medium up to +180° C, With Proximity Switch for Position Feedback Connection is available on customer request DN15-100

- NC and NO universal actuators with proximity switch up to control heads
- Switch can be easily installed on the actuator;
- Switch signal can be transmitted to PLC etc to show the valve on or off.

◆ Technical Data

- ▶ Voltage: 6-36V DC (direct current)
90-250V AC (alternating current)
- ▶ Protection class: IP65- IP67
- ▶ Detection distance: 3~5mm
Ambient temperature: -25 ~70°C

Series PVM (Manual Override for Stroke Limiting) With Manual Override for Stroke Limiting Connection is available on customer request DN15-100



- Adjust piston position, limits stroke and regulate flow volume of the Valve
- Applicable for all series of angle seat valve, and works as emergency override in cases when the controlling air source suffers no mechanical (solenoid valve) failure.

◆ Specifications

- ▶ The hand wheel for PA actuator works on valves in normally closed condition, functioning as stroke limiter, flow regulator and emergency valve-opener (lack of pilot fluid, machinery damaged, lock of piloting signal)
- ▶ The hand wheel for stainless steel actuators works as valves in normally open condition, functioning as emergency valve-closer.
- ▶ For detected application and selection advice, PLS contact ACME sales department.